

**This is the *Dalsa* Line
(Dallas to San Antonio)**

Original Galveston, Harrisburg, & San Antonio Railway
 Later, Texas & New Orleans
 Then, Southern Pacific
 Now, Union Pacific
 Sunset Route

Flatonia Siding: 9,597'

Glidden Subdivision

Flatonia Yard

Photo Pavilion

Cuero Subdivision

SA&AP Depot

House Track

To Houston

Detector:
M.P. 109.5

Tower No. 3
Original Location

Original San Antonio and Aransas Pass
 Later, Texas & New Orleans
 Then, Southern Pacific
 Now, Union Pacific

To San Antonio

Detector:
M.P. 126.0

UP Frequency for all lines is 160.665

To Victoria

Detector: M.P. 97.5

To Hearne

Detector: M.P. 107.2

Railroad Genealogy:

- BBB&C (1850 – 1870)
- GH&SA (1870 – 1934) <rails built in 1873>
- Texas & New Orleans (1934 – 1955)
- Southern Pacific (1955 – 1995)
- Union Pacific (1996 – present)

- SA&AP (1887 – 1925)
- Texas & New Orleans (1925 – 1955)
- Southern Pacific (1955 – 1996)
- Union Pacific (1996 – present)

Flatonia Rail Park
Starring Historic Tower 3

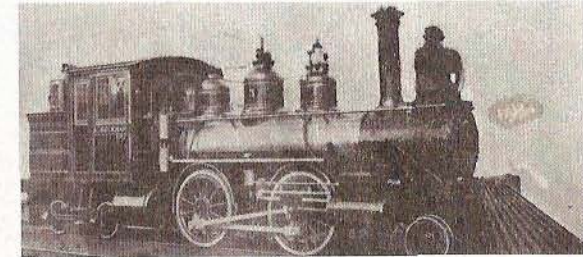


(979) 743-5366 tas@pcguns.net
 www.sidetracktommy.com
 Interstate 10 ~ Exit #661
 Take 95 South to Downtown Flatonia
 P.O. Box 66 • Flatonia, TX 78941
 Call for an appointment to tour
 Tower #3 and S.P. Caboose #4743

Flatonia Rail Park

**Conveniently Located on I-10
Between San Antonio & Houston**

A brief history of Railroads in Flatonia



In 1853, The Buffalo Bayou, Brazos & Colorado Railway, known as the BBB&C built westward from Harrisburg to Stafford's Point. This 20-mile segment was the first operational railroad in Texas.

In 1855, The BBB&C extended from Stafford's Point to the Brazos River and crossed over to Richmond via a floating bridge. The railroad reached Alleyton, near Columbus, in 1859 and this would be the terminus of the road until after the Civil War.

In 1868, the BBB&C was sold to a group of investors to pay off debts. During 1870, the railroad was sold and re-organized by Thomas Pierce, who renamed the railroad the Galveston, Harrisburg & San Antonio Railway (GH&SA).

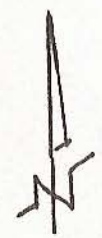
In 1873, GH&SA railway began construction towards San Antonio. Later that year, the GH&SA passed 1 and 1/2 miles northeast of a small community known as Flatonia. The town moved their homes and businesses to be located on the GH&SA railway.

In 1875, Flatonia was incorporated.

In 1887, the San Antonio & Aransas Pass Railway started building north from Yoakum to Waco. The SA&AP crossed the GH&SA in Flatonia. Tower 3 was established at the crossing in 1902.

While the tower saw many different railroads in its 94 year work history, it remained in service until 1996, when the Union Pacific automated Tower 3's operations and the tower was closed.

Ms. Martha Tauch started an initiative to save the tower, and the E.A. Arnim Museum obtained Tower 3 from the Union Pacific in 1996. Tower 3 is now preserved three blocks east of its original location.



COME VISIT OUR MANY SHOPS AND RESTAURANTS AND HISTORIC DOWNTOWN FLATONIA